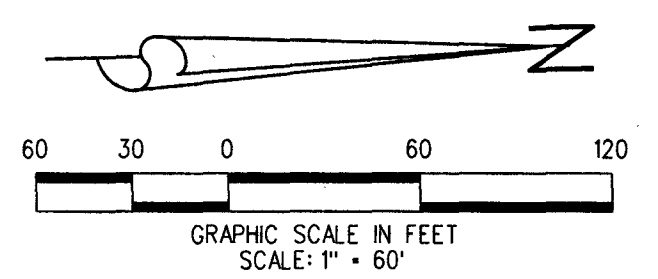


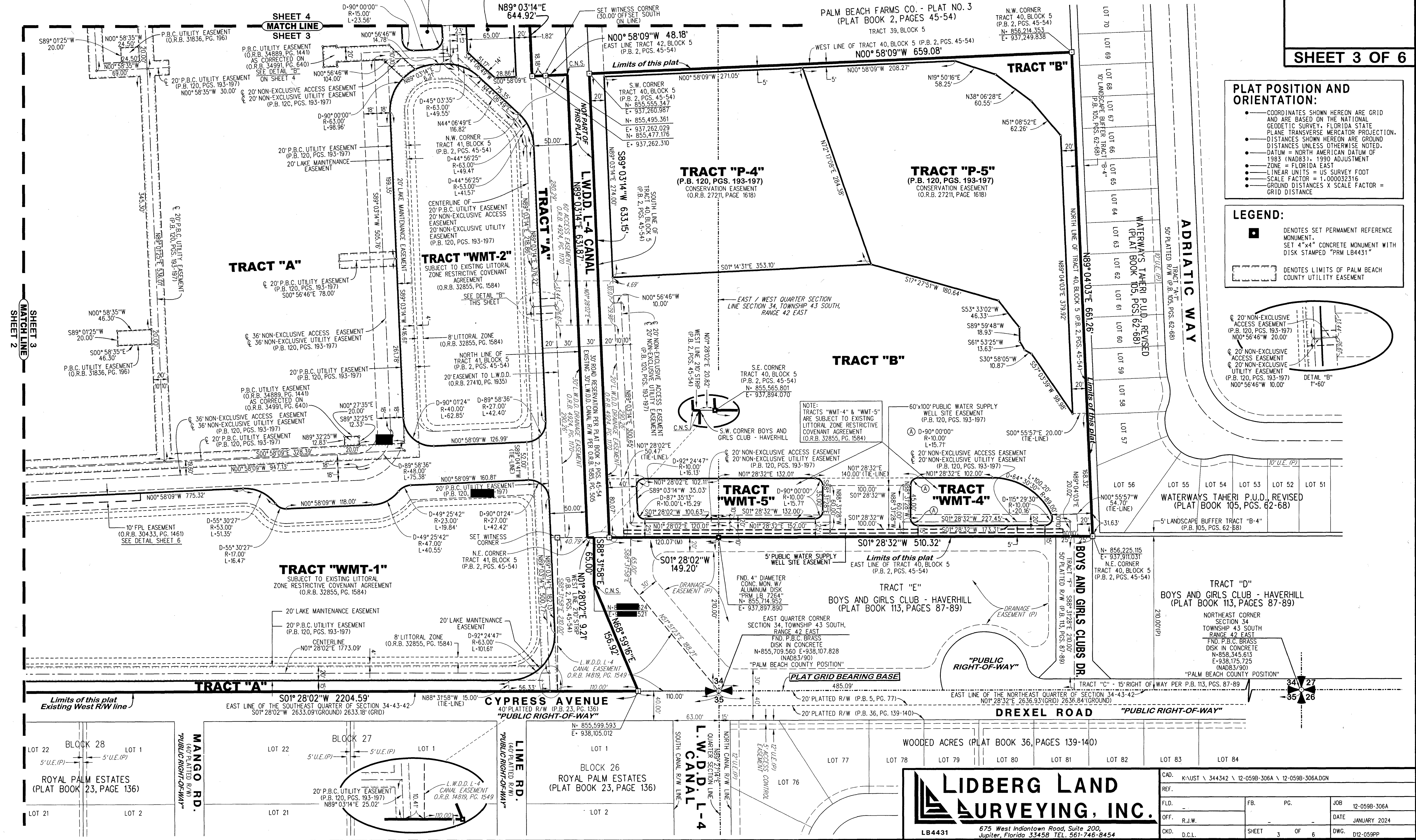
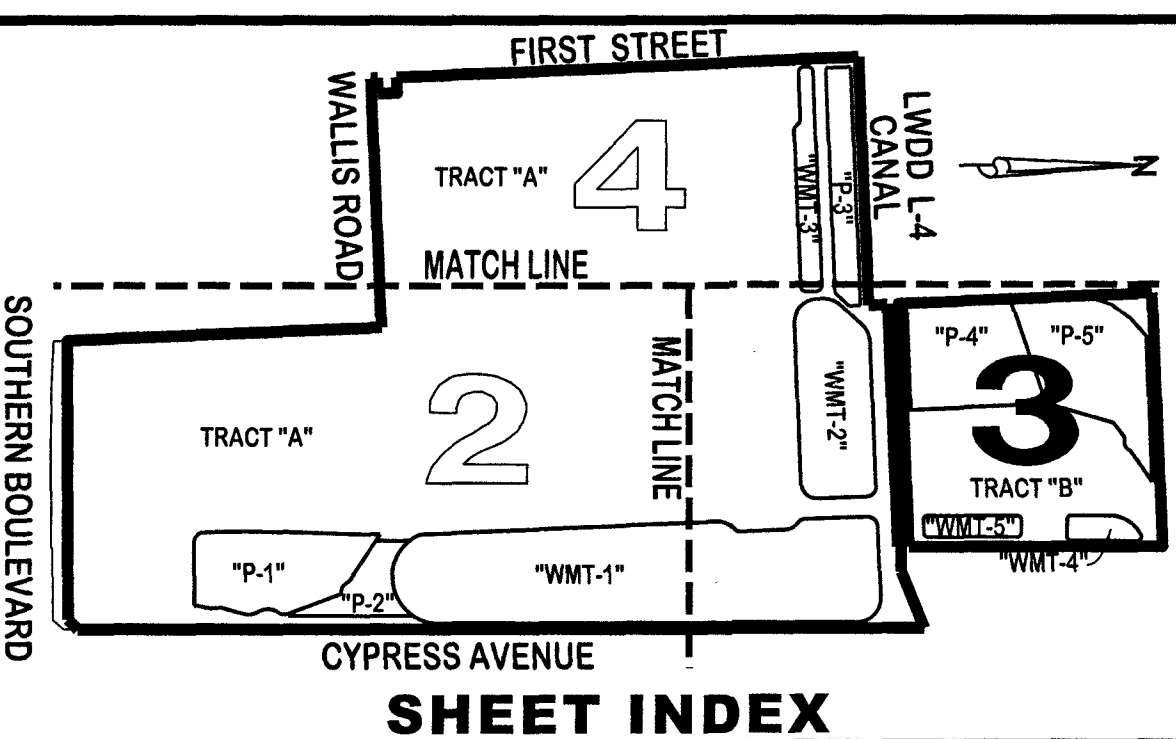
# LIBERTY AIRPORT CENTER, A M.U.P.D.

BEING A REPLAT OF A PORTION OF THE PLAT OF SOUTHERN LIGHT INDUSTRIAL PARK, A M.U.P.D., RECORDED IN PLAT BOOK 120 PAGES 193 THROUGH 197, PUBLIC RECORDS OF PALM BEACH COUNTY, FLORIDA, LYING IN SECTION 34, TOWNSHIP 43 SOUTH, RANGE 42 EAST, PALM BEACH COUNTY, FLORIDA



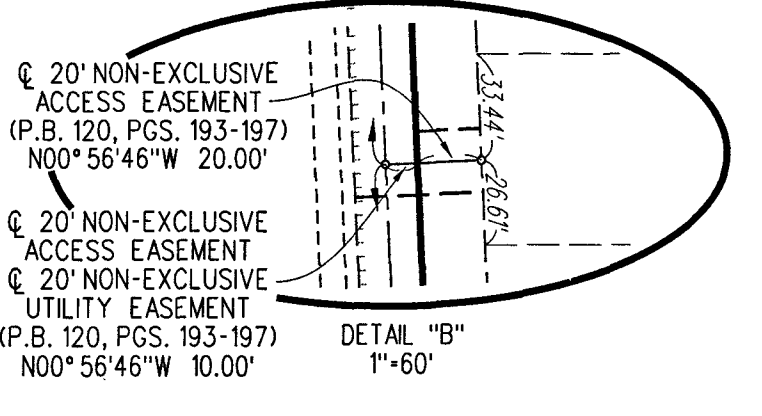
THIS INSTRUMENT WAS PREPARED BY DAVID C. LIBBERG, P.S.M., IN AND FOR THE OFFICES OF LIBBERG LAND SURVEYING, INC., 675 WEST INDIANTOWN ROAD, SUITE 200, JUPITER, FLORIDA 33458. TELEPHONE (561) 746-8454.

SHEET 3 OF 6



**PLAT POSITION AND ORIENTATION:**  
• COORDINATES SHOWN HEREON ARE GRID AND ARE BASED ON THE NATIONAL GEODETIC SURVEY, FLORIDA STATE PLANE TRANSVERSE MERCATOR PROJECTION.  
• DISTANCES SHOWN HEREON ARE GROUND DISTANCES UNLESS OTHERWISE NOTED.  
• DATUM = NORTH AMERICAN DATUM OF 1983 (NAD83), 1990 ADJUSTMENT  
• ZONE = FLORIDA EAST  
• LINEAR UNITS = US SURVEY FOOT  
• SCALE FACTOR = 1.000032316  
• GROUND DISTANCES X SCALE FACTOR = GRID DISTANCE

**LEGEND:**  
■ DENOTES SET PERMANENT REFERENCE MONUMENT.  
SET 4" X 4" CONCRETE MONUMENT WITH DISK STAMPED "PRM LB4431"  
□ DENOTES LIMITS OF PALM BEACH COUNTY UTILITY EASEMENT



WATERWAYS TAHERI P.U.D. REVISED (PLAT BOOK 105, PGS. 62-68)  
WATERWAYS TAHERI P.U.D. REVISED (PLAT BOOK 105, PGS. 62-68)  
WATERWAYS TAHERI P.U.D. REVISED (PLAT BOOK 105, PGS. 62-68)

BOYS AND GIRLS CLUBS DR  
BOYS AND GIRLS CLUBS DR  
BOYS AND GIRLS CLUBS DR

BOYS AND GIRLS CLUBS - HAVERHILL (PLAT BOOK 113, PAGES 87-89)  
BOYS AND GIRLS CLUBS - HAVERHILL (PLAT BOOK 113, PAGES 87-89)

**LIBBERG LAND SURVEYING, INC.**  
675 West Indiantown Road, Suite 200, Jupiter, Florida 33458 TEL. 561-746-8454  
LB4431

|        |   |       |              |      |           |
|--------|---|-------|--------------|------|-----------|
| REF.   | K\N\ST \ 344342 \ 12-059B-306A \ 12-059B-306A.DGN |       |              |      |           |
| F.L.D. | FB. PG.   | JOB   | 12-059B-306A |      |           |
| OFF.   | R.J.W.  | DATE  | JANUARY 2024 |      |           |
| CKD.   | D.C.L.  | SHEET | 3 OF 6       | DWG. | D12-059PP |